

BELONGING IN NEUROSCIENCE (BeIN)

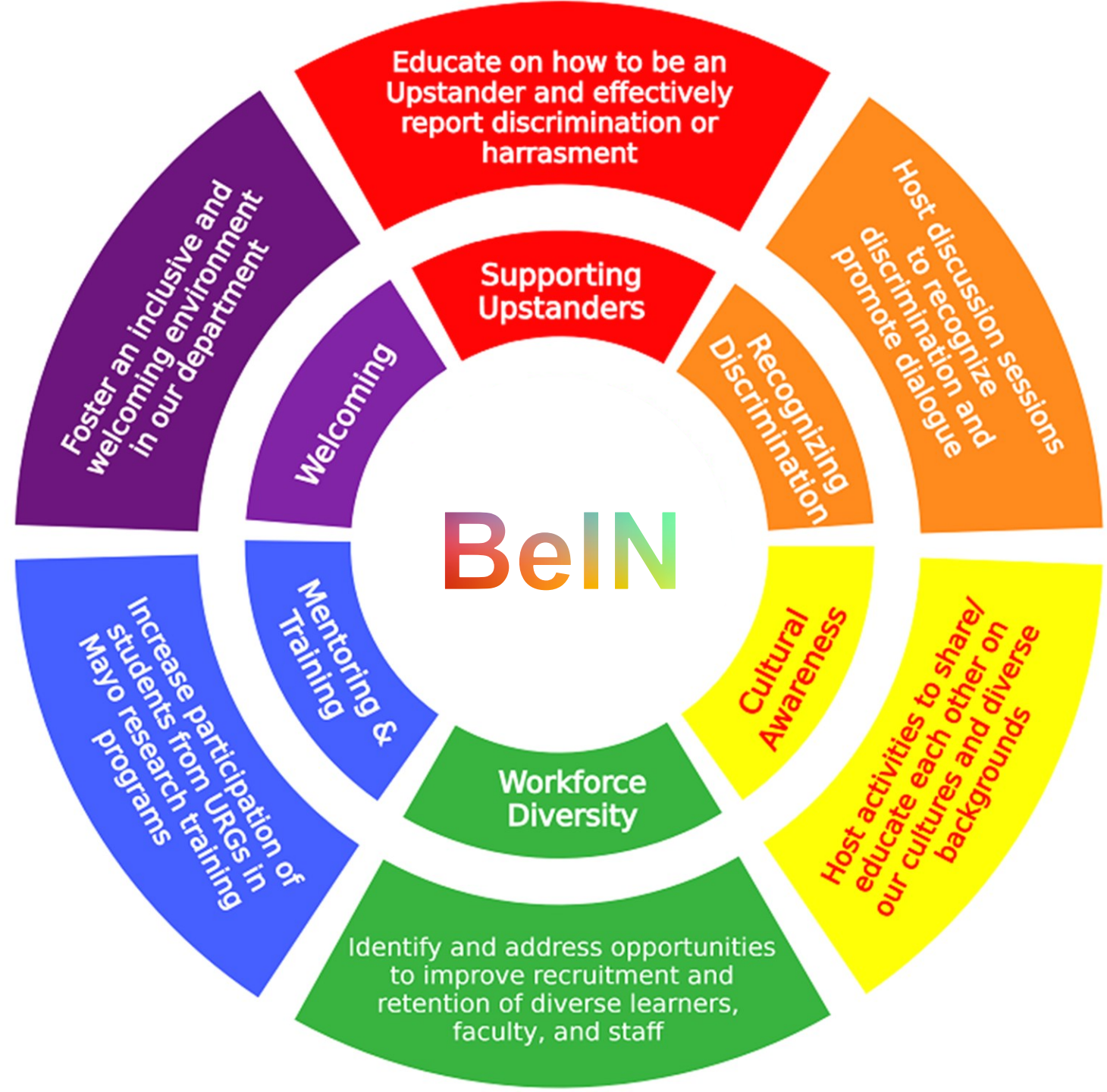
MISSION STATEMENT

WE AIM TO understand and identify the needs and priorities of our department related to engagement, belonging, and inclusion.

WE STRIVE TO actively promote engagement, belonging, and inclusion among our staff through various departmental initiatives and recognitions.

WE ARE COMMITTED TO find ways to collaborate both internally and externally, seeking partnerships, funding, and community involvement to expand the impact of neuroscience in promoting engagement, belonging, and inclusion in the discovery-innovation-translation axis.

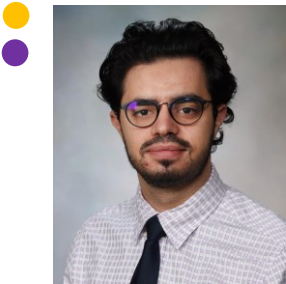
BELONGING IN NEUROSCIENCE (BeIN)



BeIN COMMITTEE MEMBERS



Minerva Carrasquillo, Ph.D.
ACII, **Neuroscience DDL**



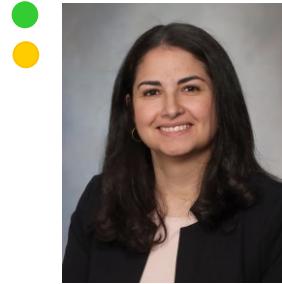
Al Alnobani
RESEARCH TECH



Taylor Andrews
PREDOCTORAL



Suelen Boschen, Ph.D.
ACI



Veronica Bowman
SUPERVISOR



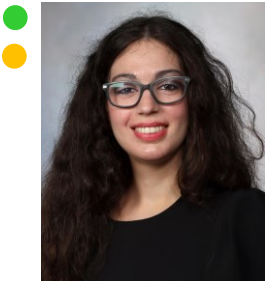
Sara Dunlop Brooks, Ph.D.
RESEARCH FELLOW



Vanessa Colon Badillo
PREP



Matt Dwarika
SUPERVISOR



Gabriella Fiorino
PREDOCTORAL



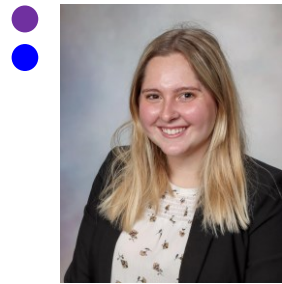
Anneliese Hill
SENIOR RESEARCH TECH



Christin Hillis
ADMINISTRATIVE ASSISTANT



Cheyenne Hurst, Ph.D.
RESEARCH FELLOW



Lindsey Kuchenbecker
PREDOCTORAL



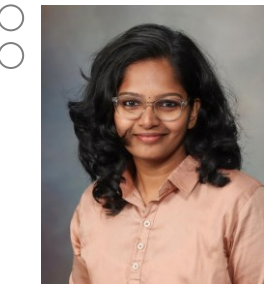
Aishe Kurti
SENIOR RESEARCH TECH



Eddie Martinez Peña, M.D., M.S.
RESEARCH FELLOW



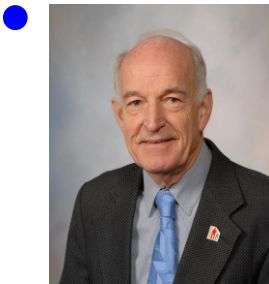
Adrienne Merza
SENIOR RPOGRAM COORDINATOR



Praseeda Mol, Ph.D.
RESEARCH FELLOW



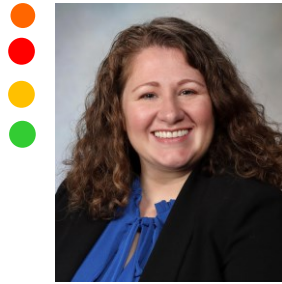
Thuy Nguyen
PRINCIPAL RESEARCH TECH



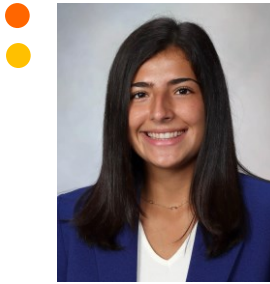
Terrone Rosenberry, Ph.D.
EMERITUS CONSULTANT



Owen Ross, Ph.D.
CONSULTANT



Sabrina Rothberg
SENIOR RPOGRAM COORDINATOR



Marissa Russo
PREDOCTORAL



Quin Tutor-New
RESEARCH TECH



Aria R. Yslas, Ph.D., M.S.
RESEARCH FELLOW