



MAYO CLINIC

**Scholarships
Available!!**

1st Mayo Clinic

SYMPOSIUM IN RECONSTRUCTIVE MICROSURGERY

June 4 - 7, 2009

**Mayo Clinic
Rochester, Minnesota**



**A Collaboration of Mayo Clinic
and Chang Gung University Medical College**

This program is endorsed by the following:
American Association for Hand Surgery (AAHS)
American Society for Reconstructive Microsurgery (ASRM)

TO REGISTER ONLINE

www.mayo.edu/cme/surgical-specialties.html

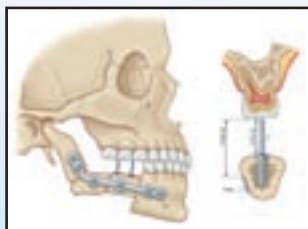
Microvascular Surgery Skills Training opportunity
See back panel for details.

COURSE OVERVIEW

Join us this spring in Rochester, Minnesota at the *1st Mayo Clinic Symposium in Reconstructive Microsurgery* being held in collaboration with Chang Gung University Medical College. This new and innovative symposium will be co-directed by Dr. Fu-Chan Wei and includes world renown national and international faculty in the field of reconstructive microsurgery. This intensive four day program will cover the latest innovations and techniques in free tissue transfers and local flap options for reconstructive surgeons involved in the treatment of defects throughout the body.

2009 Program Focus

Head and neck reconstruction
Extremity reconstruction
Breast reconstruction
Vascularized bone transfers
Advances in microsurgical techniques
Functional muscle transfers
Perforator flap surgery
Trunk and other general reconstructions



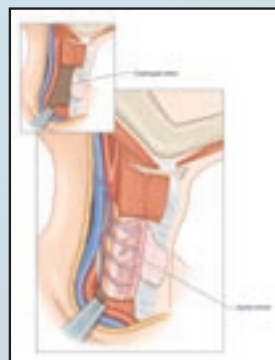
The learning formats are designed to be interactive. Case oriented teaching sessions will provide an overview for surgical demonstrations. Video demonstrations will allow participants the opportunity to ask questions and view the latest innovations in microsurgical techniques. Participants can observe Dr. Fu-Chan Wei and other expert faculty utilize the latest techniques in reconstructive microsurgery to complete flap harvest and reconstruction of complex defects. Participants will interact directly with course faculty during the entire course.

TARGET AUDIENCE

This program is specifically designed for established microsurgeons, fellows and residents who have trained in plastic surgery, ENT, oral surgery, as well as staff involved in the care and management of maxillofacial surgery and reconstructive microsurgery patients.

PROGRAM HIGHLIGHTS

Case oriented learning sessions
Interactive video demonstrations
Interactive breakout sessions
Electronic syllabus of proceedings
Informal breakfast case discussion sessions with faculty experts



PRE-CONFERENCE SKILLS LAB

On Thursday, June 4, an optional pre-course skills training session will provide an opportunity to learn from the masters. Dr. Fu-Chan Wei as well as other world renown faculty will utilize the latest techniques in reconstructive microsurgery. Participants will perform cadaveric dissection in teams to practice demonstrated techniques. This unique program will be held in Mayo Clinic's state-of-the-art Procedural Skills Laboratory. There is an additional registration fee for this program and space is limited.

EDUCATIONAL GRANTS

This course is supported, in part, by educational grants from the following companies, in accordance with ACCME Standards.

Platinum Level – KLS Martin

Gold Level – Synthes

LODGING ACCOMMODATIONS

Guest rooms have been reserved for attendees with special course rates at each of the following downtown Rochester hotels. In order to receive the special rate, reservations must be made on or before May 15, 2009 and will be taken following this date based on space and rate availability. Please identify yourself as a participant of the Mayo Reconstructive Microsurgery Symposium when making your reservation.

LODGING ACCOMMODATIONS - continued

Rochester Marriott Hotel

101 First Avenue SW
877-623-7775 or 507-280-6000
\$149 single/double

Radisson Plaza Hotel

150 South Broadway
800-333-3333 or 507-281-8000
\$115 single/double

Kahler Grand Hotel

20 Second Avenue SW
800-533-1655 or 507-282-2581
\$115 Deluxe King, single/double

Hilton Garden Inn

225 South Broadway
800-445-8667 or 507-285-1234
\$104 single/double

The hotels listed above are connected by skyways and pedestrian subways to conference facilities, downtown shops, and restaurants. You may also wish to visit the Rochester Convention and Visitors Bureau website for other accommodation options at www.rochesterconv.org. Lodging arrangements are the responsibility of the individual registrant.

TRAVEL

Rochester, Minnesota is serviced by a modern international airport with multiple flights daily from Chicago, Detroit, Dallas-Fort Worth, and Minneapolis via American or Northwest Airlines. Access to and from the airport is provided by taxi, shuttle service, and rental car. The airport is located approximately 10 miles from the Mayo Clinic campus.

The Mayo appointed travel company, Carlson Wagonlit Travel, is available to you and will provide a discounted fare for this course. To make your reservation, phone Carlson Wagonlit Travel at 1-(866) MAYO TVL or (866) 629-6885 - choose prompt # 3 for Group/Meeting Reservations, then prompt # 1 as a "traveler attending a meeting".

Please note: several cities in the United States are named Rochester. When you make airline reservations and check your baggage, be sure that your destination is Rochester, Minnesota (RST) and that your baggage has been properly tagged. Travel arrangements are the sole responsibility of the individual registrant.

ACCREDITATION

This activity has been planned and implemented in accordance with the Essential Areas and Policies of the Accreditation Council for Continuing Medical Education (ACCME) through the joint sponsorship of College of Medicine, Mayo Clinic, and Chang Gung University Medical College. College of Medicine, Mayo Clinic, is accredited by the ACCME to provide continuing medical education for physicians.

College of Medicine, Mayo Clinic, designates this educational activity for a maximum of 34.0 *AMA PRA Category 1 Credits*[™]. Physicians should only claim credit commensurate with the extent of their participation in the activity.

REGISTRATION

To register online, visit www.mayo.edu/cme/surgical-specialties.html You may also register via mail or fax using the attached registration form. The registration fee includes tuition, electronic course syllabus, breakfasts, refreshment breaks, luncheons, and the conference reception.

CANCELLATION POLICY

Your registration fee, less a \$75 administrative fee, will be refunded when written notification is received by the Mayo School of Continuing Medical Education before **May 1, 2009** (fax#: 507-284-0532). No refunds will be extended after that date.

SCHOLARSHIPS AVAILABLE

A limited number of scholarships are available to help defray the cost of tuition. Please check the appropriate box on the registration form if you are interested in being considered for a tuition scholarship.

FACULTY

Course Directors

Samir Mardini, M.D.

Associate Professor of Surgery
Senior Associate Consultant,
Division of Plastic Surgery
Rochester, Minnesota

Steven L. Moran, M.D.

Associate Professor of Orthopedics &
Plastic Surgery
Consultant, Division of Plastic Surgery &
Division of Hand Surgery
Rochester, Minnesota

Fu-Chan Wei M.D., F.A.C.S.

Professor of Plastic Surgery
Department of Plastic Surgery
Chang Gung Memorial Hospital
Chancellor, Chang Gung University
Medical College
Taipei, Taiwan

CHANG GUNG UNIVERSITY MEDICAL COLLEGE, TAIWAN

Ming-Huei Cheng, M.D.

Associate Professor of Plastic Surgery

David Chwei-Chin Chuang, M.D.

Professor of Plastic Surgery

Seng-Feng Jeng, M.D.

Professor of Plastic Surgery

Chih-Hung Lin, M.D.

Professor of Plastic Surgery
Vice Chairman, Department of Plastic
Surgery

INTERNATIONAL FACULTY

Hung-Chi Chen, M.D.

Professor of Plastic Surgery &
Superintendent
E-DA Hospital/I-Shou University
Kaohsiung, Taiwan

Gunter Germann, M.D.

Department of Plastic, Hand &
Reconstructive Surgery
BG Trauma Center
Department of Plastic & Hand Surgery
The University of Heidelberg
Ludwigshafen, Germany

Marco Innocenti, M.D.

Clinical Professor of Microsurgery
Head of Reconstructive Microsurgery Unit
Careggi University Hospital
Florence, Italy

Ralph T. Manktelow, M.D.

Professor of Surgery, Division of Plastic
Surgery
Department of Surgery
University of Toronto
Ontario, Canada

Milomir Ninkovic, M.D., Ph.D.

Head of Department, Department of
Plastic, Reconstructive, Hand and Burn
Surgery
Academic Hospital Munich
Bogenhausen
Technical University Munich
Munich, Germany

Eric Santamaria, M.D.

Associate Professor, Department of
Plastic and Reconstructive Surgery
Hospital General "Dr. Manuel Gea
Gonzalez"
Universidad Nacional Autonoma de
Mexico
Mexico City, Mexico

Michael Sauerbier, M.D.

Chairman & Professor, Department
of Plastic, Hand and Reconstructive
Surgery
Academic Hospital
University of Frankfurt
Frankfurt, Germany

UNITED STATES FACULTY

Joseph J. Disa, M.D.

Associate Professor of Surgery, Weill
Medical College of Cornell University
Associate Attending Surgeon,
Department of Plastic & Reconstructive
Surgery
Memorial Sloan-Kettering Cancer Center
New York, New York

Geoffrey G. Hallock, M.D.

Department of Plastic Surgery
Lehigh Valley Hospital
Allentown, Pennsylvania

James P. Higgins, M.D.

Consultant, Hand/Arm Microsurgery &
Vascular Surgery
The Curtis National Hand Center
Union Memorial Hospital
Baltimore, Maryland

L. Scott Levin, M.D.

Chief of Plastic, Reconstructive, Oral and
Maxillofacial Surgery
Professor of Orthopaedic and Plastic
Surgery
Duke University Medical Center
Durham, North Carolina

Maurice Y. Nahabedian, M.D.

Associate Professor of Plastic Surgery,
Department of Plastic Surgery
Georgetown University
Washington, D.C.

Peter C. Neligan, M.B., B.Ch.

Professor of Surgery
Director, Center for Reconstructive
Surgery
University of Washington
Seattle, Washington

Julian Joseph Pribaz, M.B.,B.S.
Professor of Surgery, Harvard Medical
School
Brigham and Women's Hospital
Boston, Massachusetts

Richard J. Redett, M.D.
Assistant Professor of Surgery, Johns
Hopkins Medicine
Johns Hopkins Cleft and Craniofacial
Center
Baltimore, Maryland

Geoffrey L. Robb, M.D.
Professor and Chairman, Department of
Plastic Surgery
University of Texas at M.D. Anderson
Cancer Center
Houston, Texas

Eduardo D. Rodriguez, M.D., D.D.S.
Section Chief, Plastic & Reconstructive
Surgery
R Adams Cowley Shock Trauma Center
Associate Professor, University of
Maryland School of Medicine
Baltimore, Maryland

Christopher J. Salgado, M.D.
Assistant Professor of Plastic Surgery
Case Western Reserve University
Medical School
Director of Center for Body Contouring
& Reconstruction
University Hospitals Case Medical
Center
Cleveland, Ohio

Nicholas B. Vedder, M.D.
Professor, Surgery & Orthopedics
Chief of Plastic Surgery
Vice Chair, Department of Surgery
University of Washington
Seattle, Washington

MAYO CLINIC FACULTY

Allen T. Bishop, M.D.
Professor of Orthopedics
Consultant, Division of Hand Surgery
Rochester, Minnesota

Phillip G. Arnold, M.D.
Professor and Chief Emeritus, Division
of Plastic Surgery
Rochester, Minnesota

Uldis Bite, M.D.
Associate Professor of Plastic Surgery
Consultant, Division of Plastic Surgery
Rochester, Minnesota

Brian T. Carlsen, M.D.
Senior Associate Consultant, Division
of Plastic Surgery & Division of Hand
Surgery
Rochester, Minnesota

William J. Casey, III, M.D.
Assistant Professor of Plastic Surgery
Consultant, Division of Plastic Surgery
Scottsdale, Arizona

Paul L. Claus, M.D.
Assistant Professor of Medicine
Medical Director, Mayo Clinic
Hyperbaric & Altitude Medicine
Program
Consultant, Division of Preventive,
Occupational and Aerospace Medicine
Rochester, Minnesota

Craig H. Johnson, M.D.
Associate Professor of Plastic Surgery
Chair & Consultant, Division of Plastic
Surgery
Consultant, Division of Hand Surgery
Rochester, Minnesota

Salvatore C. Lettieri, M.D.
Instructor in Plastic Surgery
Consultant, Division of Plastic Surgery
Rochester, Minnesota

Eric J. Moore, M.D.
Assistant Professor of Otolaryngology
Consultant, Department of
Otolaryngology
Rochester, Minnesota

Kevin L. Rieck, D.D.S.
Consultant, Division of Oral and
Maxillofacial Surgery
Rochester, Minnesota

Thomas J. Salinas, D.D.S.
Associate Professor of Dentistry
Division of Prosthodontics
Rochester, Minnesota

Alexander Y. Shin, M.D.
Professor of Orthopedics
Consultant, Department of Orthopedic
Surgery
Rochester, Minnesota

Anthony A. Smith, M.D.
Associate Professor of Plastic Surgery
Consultant, Division of Hand Surgery,
Division of Plastic Surgery & Division of
Hand Surgery
Scottsdale, Arizona

Robert J. Spinner, M.D.
Professor of Neurologic Surgery,
Orthopedics and Anatomy
Consultant, Department of Neurologic
Surgery
Rochester, Minnesota

Nho (Bill) V. Tran, M.D.
Assistant Professor of Plastic Surgery
Consultant, Division of Plastic Surgery
Rochester, Minnesota

Molly F. Walsh, D.O.
Senior Associate Consultant, Division of
Plastic Surgery
Rochester, Minnesota

Program Schedule

THURSDAY JUNE 4, 2009

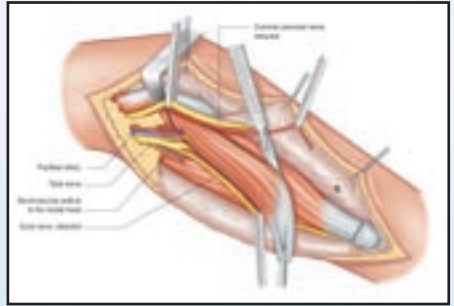
PRE-CONFERENCE WORKSHOP - CADAVER DISSECTION

Challenge the Masters Breakfast Session

Dissection of the following:

Head and Neck

- Temporoparietal Fascia Flap
- Forehead Flap
- FAMM Flap
- Submental Flap



Upper Extremity

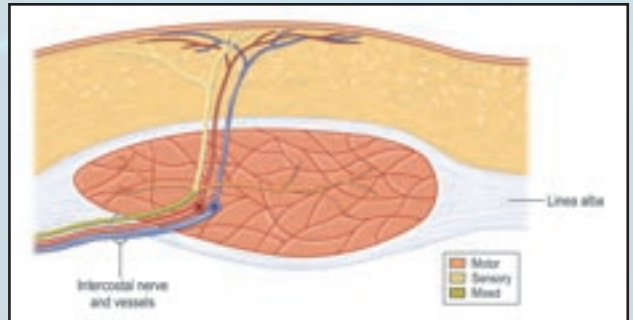
- Lateral Arm
- Radial Forearm
- First Dorsal Metacarpal Artery Island Flap

Chest Flaps

- Pectoralis Major
- Deltopectoral
- Internal Mammary Artery Perforator Flap

Trunk and Pelvis

- Parascapular (with and without bone)
- Groin
- Iliac
- DIEP

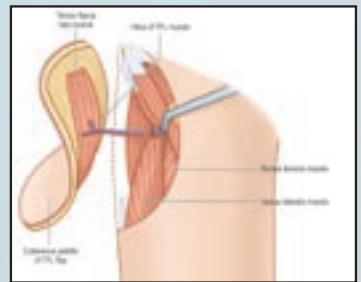


Lower Extremity Flaps

- Gastrocnemius
- Soleus
- Sural
- Fibula
- Anterolateral Thigh
- Tensor Fascia Lata
- Gracilis
- Medial Femoral Condyle Corticoperiosteal Flap

Recipient Vessel Exposure

- Head and Neck
- Trunk
- Upper Extremity
- Lower Extremity



GENERAL SESSION - FRIDAY, JUNE 5, 2009

Challenge the Masters Breakfast Session

SESSION I & II

Reconstructive Surgery: Principles, Advances and Controversies

- Reconstructive Surgery: The Present and Future
- Reconstructive Ladders
- Flap Classification and Flap Selection in Reconstructive Surgery: Controversies and Principles

Program Schedule

- Achieving Optimal Results in Reconstructive Surgery Using Techniques of Prefabrication and Prelamination
- Workhorse Flaps in Reconstructive Surgery
- Recipient Vessels in Difficult Cases: How to Choose, What to Avoid and Tips to Prevent Complications
- The Recurring Defect in Reconstructive Surgery
- Managing a Flap Failure
- Flap Handling: Thinning and Tailoring
- Postoperative Management and Monitoring of the Reconstruction Patient
- The Role for Hyperbaric Medicine in the Surgical Patient
- Maximizing Aesthetic Outcomes in Reconstructive Surgery
- Maximizing Aesthetic Outcomes at the Donor Site
- Flap Re-Exploration
- Composite Tissue Transplantation: Where are We and Where are We Going?
- Perforator Flaps: Schematics to Simplify Design and Unusual Donor Sites for Perforator Flaps
- Special Lecture: Extremes in Microsurgery

SESSION III - Lower Extremity

- Preoperative Planning in Lower Extremity Reconstruction
- Microsurgical Free Flap Soft Tissue Coverage and Defect Reconstruction in the Lower Extremity
- Osteomyelitis Reconstruction: Muscle vs. Fasciocutaneous Flaps
- Vascularized Bone for Segmental Bone Defects and Non-Union
- Case Presentations – Challenge the Faculty
- Coverage Reconstruction in the Lower Extremity with Non-Microsurgical Options
- Growth Plate Transfers: Indications, Techniques and Long-Term Results
- Reconstruction of the Weight-Bearing Heel
- Vascularized Bone vs. Bone Transport for Treatment of a Segmental Bone Defect

SESSION IV - Chest Wall, Genitourinary and General Reconstruction

- Chest Defect Reconstruction with Pedicled Flaps
- Chest Defect Reconstruction with Free Flaps
- Recipient Vessels in Chest and Trunk Reconstruction
- Pelvic and Spinal Coverage Reconstruction
- Reconstruction of Bladder Function Using Functional Muscle Transfers
- Vascularized Bone for Spinal Reconstruction
- Penile Reconstruction with Cutaneous flaps and Osteocutaneous Flaps

Breakout Sessions

- Toe Transplantation and Replantation
- Salvaging the Failing Flap

Interactive Surgical Procedure Demonstrations

- Anterolateral Thigh Perforator Flap for Hypopharyngeal and Cervical Esophagus Reconstruction
- Jejunum Flap for Esophageal Reconstruction
- Ileocolon Flap for Reconstruction of Esophagus and Voice
- Deep Inferior Epigastric Artery Perforator (DIEP) Flap for Breast Reconstruction
- Inferior Gluteal Artery Perforator (IGAP) Flap for Breast Reconstruction

Program Schedule

- Superficial Inferior Epigastric Artery (SIEA) Flap for Breast Reconstruction
- Anterolateral Thigh Perforator Flap, Suprafascial Dissection
- Vastus Lateralis Myocutaneous Flap Dissection
- Anterolateral Thigh Flap for Wound Coverage and Flow Through Reconstruction of the Radial Artery
- Reverse Pedicled Anterolateral Thigh Perforator Flap with Venous Supercharge for Popliteal Defect
- Radial Forearm Flap, Suprafascial Dissection

SATURDAY, JUNE 6, 2009

Challenge the Masters Breakfast Session

SESSION V - Upper Extremity Reconstruction and Replantation

- Major Limb Replantation: Avoiding Disaster
- Coverage Reconstruction of the Upper Extremity
- Intrinsic Flaps from the Hand for Coverage Reconstruction
- Microsurgical Thumb Reconstruction
- Microsurgical Finger Reconstruction, (not including the thumb)
- The Burned Hand
- Vascularized Bone and Periosteal Flaps for Complex Carpal Bone Problems
- Sarcoma Reconstruction in the Upper Extremity
- Thin Flaps in Upper Extremity Reconstruction

Breakout Sessions

- Local Flaps for Hand and Wrist Coverage
- Venous Flaps
- Functional Muscle Transfers for Various Purposes

SESSION VI & VII - Innervation and Animation

- Nerve Coaptation: Tubes, Autografts, and Allografts
- Brachial Plexus Reconstruction
- Pedicled Functioning Muscle Transfers for Brachial Plexus Reconstructions
- Free Functioning Muscle Transfers for Brachial Plexus Reconstruction
- Functioning Muscle Transfers for Traumatic Loss of Muscles
- Facial Nerve Anatomy and Function
- Local Muscle Transfers in Facial Reanimation Surgery
- Functioning Muscle Transfers for Facial Reanimation: My Experience
- Facial Reanimation with Nerves Other than Contralateral Facial Nerve
- Facial Reanimation: Principles and Decision Making in Secondary Cases
- Beyond the Smile in Facial Reanimation Surgery
- Functioning Muscle Transfers for Multiple Purposes: Foot Drop, Lower Lip, Abdominal Wall, and Urinary Bladder

Breakout Sessions

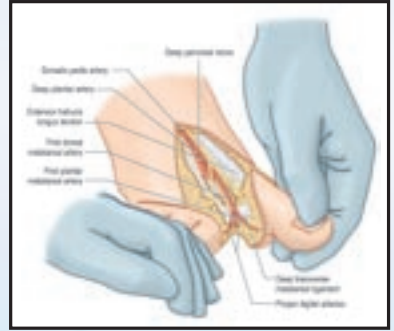
- New Frontiers in Pediatric Reconstruction
- Genital Reconstruction
- Prefabrication and Prelamination of Flaps and Tissue Expansion

SESSION VIII - Head and Neck I

- Flaps in Head and Neck Reconstruction
- Mandible Reconstruction with Vascularized Bone Flaps
- Reconstruction of Composite Defects with Composite Flaps in the Head and Neck

Program Schedule

- Complex Craniofacial Defect Reconstruction with Vascularized Osseous Flaps
- Bone Fixation in the Head and Neck
- Managing the Condyle in Mandibular Reconstruction
- An Algorithm in Maxillary Reconstruction
- Osteointegration Teeth in Vascularized Fibula Reconstructed Mandible and Maxilla
- Complex Reconstructions in the Head and Neck Requiring More Than One Flap
- Prosthetic Rehabilitation of the Head and Neck Reconstruction Patient
- Maxilla and Mandible Reconstruction with Non-Vascularized Bone Grafts with or without Osteointegrated Implants



Interactive Surgical Procedure Demonstrations

- Fibula Osteoseptocutaneous Flap with Primary Osteointegrated Implants for Mandible Reconstruction
- Fibula Flap for Obliteration and Osseous Reconstruction of a Persistent Frontal Basilar Fracture Infection Associated with Nasofrontal Outflow Tract Obstruction
- Trimmed Great Toe Flap
- Endoscopic Harvest of Gracilis Muscle
- Facial Reanimation (Second Stage) Reconstruction with Gracilis
- Functioning Muscle Transfer: Gracilis Muscle
- Finger Flexion Reconstruction with Gracilis Functioning Muscle Transfer
- Reconstruction of Foot Dorsiflexion with Rectus Femoris Functioning Muscle Transfer
- Shoulder Abduction Reconstruction: Transfer of Latissimus, Teres Major and Clavicular Portion of Pectoralis Major
- Temporoparietal Fascia Flap
- Thinned Latissimus Dorsi Perforator Flap, Thoracodorsal Perforator Flap and Lateral Thoracic Perforator Flap
- Lateral Arm Flap for Webspace Contracture Release
- Pedicled Peroneal Artery Perforator Flap for Reconstruction of Soft Tissue Defect over Tibia

SUNDAY, JUNE 7, 2009

Challenge the Masters Breakfast Session

SESSION VIII - Head and Neck II

- Sensory Innervation of Flaps in Head and Neck Reconstruction
- Intestine Flaps vs. Skin Flaps for Esophageal Reconstruction
- Voice Reconstruction Using Intestinal Flaps
- Management of Flap Failure in Head and Neck Reconstruction
- One Flap Does Many Things in Head and Neck Reconstruction
- Cranial Base Reconstruction

Program Schedule

Breakout Sessions

- Breast Reconstruction using Autologous Tissue; Microsurgical and Non-Microsurgical
- Facial Reanimation
- Severe Injuries of the Face and Facial Skeleton: An Algorithm for Reconstruction

SESSION IX - Breast

- Preoperative Planning for Breast Reconstruction
- Microsurgical Autogenous Tissue Transfer: What Flap Should We Use and When?
- Solutions for Inadequate Venous Outflow in Free Flap Breast Reconstruction
- Reconstructing Partial Defects of the Breast
- Lessons Learned in Complicated Breast Reconstruction Cases
- Radiation in Implant Based and Autologous Tissue for Reconstruction of the Breast
- Breast Reconstruction Following Previous Failures
- Fat Injection in Breast Reconstruction: Standards and Controversies
- Management of Post-Mastectomy Upper Extremity Edema

Awards Presentation

Upon completion of the course, awards will be given to those who have presented cases to professors during interactive breakfast sessions and at the end of the panels in the following categories:

- Best Case Head and Neck
- Best Case Chest and General
- Best Case Innervation and Animation
- Best Case Upper Extremity and Replantation
- Best Case Lower Extremity
- Best Case Breast Reconstruction



1st Mayo Clinic Symposium in Reconstructive Microsurgery

June 4 - 7, 2009
Mayo Clinic
Rochester, Minnesota

Mail form and payment to:

Mayo School of CME
Plummer 2-60
200 First Street SW
Rochester, MN 55905

Phone: 800-323-2688 or 507-284-2509
Fax: 507-284-0532
Website: www.mayo.edu/cme/surgical-specialties.html
Email: cme@mayo.edu

Contact Information - (Please print or type all information. You may duplicate this form for multiple registrations.)

Name of Registrant - first name, middle name or initial, last name		Degree - select all that apply <input type="checkbox"/> MD <input type="checkbox"/> DO <input type="checkbox"/> PhD <input type="checkbox"/> PA <input type="checkbox"/> NP <input type="checkbox"/> Other - specify	
Name of Institution		Medical Specialty	
Preferred Mailing Address - select one <input type="checkbox"/> Work/Business <input type="checkbox"/> Home			
Work/Business Address - street address		Work Phone - include all country and city/area codes along with complete phone number	
City	State or Province	ZIP or Postal Code	Country
Home Address - street address		Work Phone - include all country and city/area codes along with complete phone number	
City	State or Province	ZIP or Postal Code	Country
E-mail Address*	FAX - include all country and city/area codes along with complete phone number	FAX Location (select) <input type="checkbox"/> Work/Business <input type="checkbox"/> Home	
<div style="display: flex; align-items: center;"> <div style="background-color: black; color: white; padding: 5px; font-weight: bold; margin-right: 10px;">SPECIAL NEEDS</div> <p>If you have special assistance needs or dietary restriction, describe here:</p> </div>			

Registration

Registration	On or Before	After	
Physicians & Scientists	5/20/09	5/20/09	
Residents & Fellows, Physician Assistants, Nurse Practitioners, Others	\$995	\$1,095	\$ _____
<input type="checkbox"/> I am interested in applying for a scholarship	\$795	\$895	\$ _____
Pre-Course Laboratory Workshop	On or Before	After	
	5/20/09	5/20/09	
Physicians & Scientists	\$495	\$595	\$ _____
Residents & Fellows, Physician Assistants, Nurse Practitioners, Others	\$295	\$395	\$ _____

Payment Information

<input type="checkbox"/> Check is enclosed in the amount shown at right - make checks payable to Mayo Clinic			Payment Total
Credit Card - select one <input type="checkbox"/> Discover <input type="checkbox"/> MasterCard <input type="checkbox"/> Visa	Account Number	Exp Date - mo/yr	
Name of Cardholder - as appears on the card	Signature of Cardholder - required x		



MAYO CLINIC

Mayo School of Continuing Medical Education
200 First Street SW
Rochester, MN 55905

SYMPOSIUM IN RECONSTRUCTIVE MICROSURGERY

June 4 - 7, 2009

Mayo Clinic, Rochester, Minnesota

A Collaboration of Mayo Clinic
and Chang Gung University Medical College

This program is endorsed by the following:
American Association for Hand Surgery (AAHS)
American Society for Reconstructive Microsurgery (ASRM)

TO REGISTER ONLINE
www.mayo.edu/cme/surgical-specialties.html

To participate in a special 3-day
Microvascular Surgery Skills Training opportunity
visit: www.mayo.edu/cme/surgical-specialties.html
or call 507-284-8313.

www.mayo.edu/cme/surgical-specialties.html

NON-PROFIT ORG.
U.S. POSTAGE
PAID
MAYO CLINIC