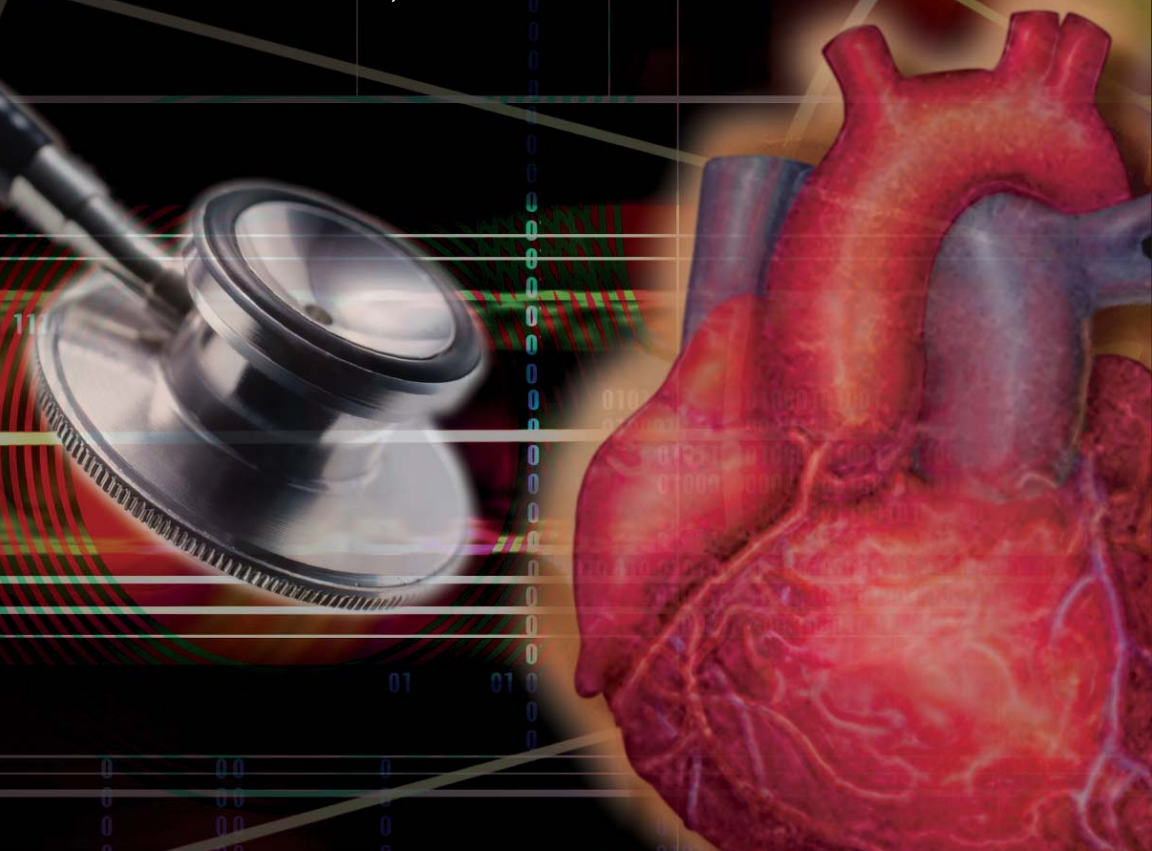


Adult Congenital Heart Disease:

Challenging Cases from the Mayo Clinic

Saturday, March 5, 2005

The Peabody Orlando
Orlando, Florida



Program Director: Carole A. Warnes, M.D.

Continuing Education Program Sponsored
by the Mayo Clinic Cardiovascular Division

*This event is not part of the official ACC Annual Scientific Session as
planned by the Annual Scientific Session Program Committee (ASSPC).*

General Information

Course Description

There are an estimated one million adults with congenital heart defects in the United States today. This unique population faces significant challenges very different from those with ischemic or valvular disease. **The program will feature case-based interactive format designed to test your knowledge and to discuss "cutting edge" treatment strategies for common problems seen in practice.** Medical challenges may include arrhythmias, heart failure, pulmonary hypertension and appropriate timing for operative intervention. The program will review appropriate clinical and imaging evaluation, different medical, interventional and surgical therapies and pregnancy issues encountered by these patients.

This event is not part of the official ACC Annual Scientific Session as planned by the Annual Scientific Session Program Committee (ASSPC).

Course Highlights

Upon completion of this program, participants should be able to:

- Formulate a clinical approach to the diagnosis of the adult with congenital heart disease
- Recognize common residua and sequelae of surgical repair of congenital heart defects
- Compare septal reduction therapies in patients with hypertrophic cardiomyopathy
- Develop an algorithm for arrhythmia management in patients with common cardiac defects
- Utilize up-to-date treatment strategies for the adult congenital patient with appropriate timing for surgical intervention

Intended Audience

This course is designed for cardiologists, pediatric cardiologist, cardiac surgeons, internists, cardiovascular fellows and nurses with roles in the diagnosis, assessment, and management of adult patients presenting with congenital heart defects.

Credit

Mayo Foundation is accredited by the Accreditation Council for Continuing Medical Education (ACCME) to provide continuing medical education for physicians.

Mayo Foundation designates this educational activity for a maximum of 3.5 hours in category 1 credit towards the AMA Physician's Recognition Award. Each physician should claim only those hours of credit that he/she actually spent in the educational activity.

General Information

Date and Location

The Adult Congenital Heart Disease symposium will be held **Saturday, March 5, 2005**, at The Peabody Orlando, 9801 International Drive. The meeting location will be in the Plaza International Ballroom, Sections F&G on the Convention Level of the hotel.

Faculty

Course Director:

Carole A. Warnes, M.D.

Mayo College of Medicine Faculty:

Frank Cetta, Jr., M.D.

Heidi M. Connolly, MD.

Joseph A. Dearani, M.D.

Martha Grogan, M.D.

Rick A. Nishimura, M.D.

Douglas L. Packer, M.D.

Faculty Disclosure

As a provider accredited by ACCME, Mayo Foundation must ensure balance, independence, objectivity and scientific rigor in its educational activities. All faculty participating in a Mayo Foundation activity are required to disclose commitments to and/or relationships with pharmaceutical companies, biomedical device manufacturers or distributors, or others whose products or services may be considered to be related to the subject matter of the educational activity. Faculty will also disclose any off-label and/or investigational use of pharmaceuticals or instruments discussed in their presentation. Disclosure of these commitments and/or relationships will be published in course materials so those participants in the activity may formulate their own judgments regarding the presentation.

Program Schedule

Saturday, March 5, 2005

- 1:15 p.m. **Registration and Refreshments**
- 1:55 p.m. **Welcome and Course Overview**
Drs. David L. Hayes and Carole A. Warnes

Adult Congenital Heart Disease: Challenging and Illustrative Cases

Moderator: *Carole A. Warnes, M.D.*

Panel: *Drs. Cetta, Connolly, Dearani, Grogan, Nishimura, and Packer*

- 2:00 p.m. **Coarctation - Reoperation**
Heidi M. Connolly, M.D.
- 2:25 p.m. **Aortic Stenosis and Pregnancy**
Martha Grogan, M.D.
- 2:45 p.m. **Repaired Tetralogy of Fallot: Pulmonary
Regurgitation and Arrhythmias**
Heidi M. Connolly, M.D.
- 3:10 p.m. **Ebstein's Anomaly: Timing and Type of Surgery**
Joseph A. Dearani, M.D.
- 3:35 p.m. **Refreshment Break**
- 4:00 p.m. **Fontan with Atrial Arrhythmias:
Medicine, Burn or Convert?**
Douglas L. Packer, M.D.
- 4:30 p.m. **Hypertrophic Cardiomyopathy:
Septal Ablation vs. Myectomy**
Rick A. Nishimura, M.D.
- 4:55 p.m. **Congenitally Corrected Transposition of the
Great Arteries and Systemic A-V Valve Regurgitation**
Frank Cetta, M.D.
- 5:20 p.m. **Pregnancy and Valve Prostheses**
Carole A. Warnes, M.D.
- 5:45 p.m. **Questions and Answers**
- 6:00 p.m. **Adjourn**
Return CME Forms and Evaluation

Registration Form

Adult Congenital Heart Disease:

Challenging Cases from the Mayo Clinic

Registration: 1:15 – 2:00 pm

Meeting: 2:00 – 6:00 pm

March 5, 2005

The Peabody Orlando, Plaza International Ballroom • Orlando, Florida

Mail or FAX this completed registration form to:

Mayo Cardiovascular CME
Attn: Deborah Feils
200 First Street SW; Gonda 6
Rochester, MN 55905

Telephone: 800-283-6296
or 507-266-0677
FAX: 507-538-0146
E-mail: cvcme@mayo.edu
Website: www.mayo.edu/cme

Deadline for registration is February 23, 2005.

Please complete the registration form below and fax to (507)538-0146.

Confirmation of your registration will be forwarded to you upon receipt of this form.

Onsite registration will be accepted but limited to space availability.

(Please print or type all information. You may duplicate this form for multiple registrations.)

Name _____
First Name Middle Name or Initial Last Name

Degree MD PhD DO PA NP Other _____

Institution _____

Medical Specialty Cardiology Cardiovascular Surgery Other _____

E-mail Address _____

Which is your preferred mailing address: Work/Business Home


Address _____

City _____ State/PV _____ ZIP/Postal Code _____ Country _____

Business Telephone (_____) _____ FAX (_____) _____

Int'l Telephone (Country code) _____ (City code) _____ (Phone) _____

Int'l FAX (Country code) _____ (City code) _____ (Phone) _____

 Please indicate your needs here if you require special accommodations to participate:

COMPLIMENTARY REGISTRATION



Mayo Clinic
200 First St. S.W./CV CME
GO 6-138
Rochester, MN 55905

Adult Congenital Heart Disease:

Challenging Cases from the Mayo Clinic

March 5, 2005

The Peabody Orlando
Orlando, Florida

REGISTER NOW!

Non-Profit
Organization
U.S. POSTAGE PAID
Minneapolis, MN
Permit No. 3395